

# QUEEN MARY JOURNAL OF INTELLECTUAL PROPERTY

Editor in Chief

**Johanna Gibson**, Herchel Smith Professor of Intellectual Property Law, Queen Mary University of London

Consultant Editor

**Lord Hoffmann**, Honorary Professor of Intellectual Property Law, Queen Mary University of London

Book Review Editor: **Shane Burke**, Queen Mary University of London, UK

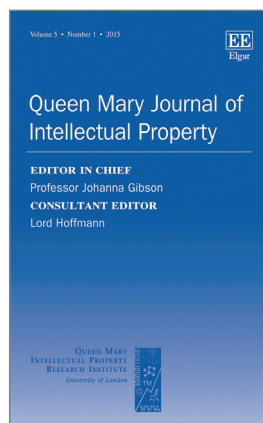
**Queen Mary Journal of Intellectual Property is the only IP journal with an Impact Factor included in the Social Sciences Citation Index.**

## Aims and scope

Intellectual property law attracts diverse international attention and warrants considered scholarship and analysis. Not only is this an area of detailed practice and study, but also a significant part of each citizen's daily life. From the question of access to products to concerns for the creative and innovative process, this area of law is of considerable interest to scholars and the general public alike. Modern intellectual property practice and scholarship is necessarily interdisciplinary, intersecting not only with other areas of law, but also with cultural and socio-economic approaches to knowledge. Contemporary research considers the operation of intellectual property in the context of human rights, social, political and economic spheres. Engaging the diversity of perspectives on these important issues is essential to comprehensive debate, and it is this richness of debate and interrogation to which *QMJIP* seeks to participate, by publishing high quality contributions to the field.

**The editors seek high quality contributions of between 7,000-12,000 words from academics or practitioners working in the field. Examples of suitable topics include, but are not limited to:**

- Copyright/authorship issues
- Patent issues
- Trade-mark issues
- Protection of new technologies
- Software protection
- Biotechnological developments
- Licensing
- Litigation and settlement issues
- E-commerce law
- New Internet applications and developments
- Information technology law
- Jurisdictional issues
- Creative Industries
- Intellectual Property and Legal Theory
- International accords
- Opportunities for harmonisation
- Enforcement issues
- Jurisdictional comparisons
- Economic perspectives on intellectual property rights and developments
- Competition, human rights, health, and environmental law issues as they relate to intellectual property.



**ISSN Print**  
2045-9807

**ISSN Online**  
2045-9815

## To place a subscription:

The Subscriptions Dept  
Marston Book Services Ltd  
160 Eastern Avenue, Milton Park  
Abingdon  
OXON OX14 4SB UK  
Tel: +44 1235 465574  
Fax: +44 1235 465556  
Email:  
subscriptions@marston.co.uk

## For more information

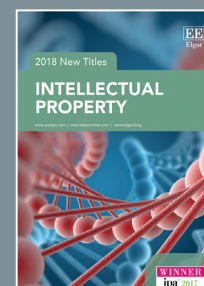
Email: [journals@e-elgar.co.uk](mailto:journals@e-elgar.co.uk)



## Follow us!

For our latest news,  
views and discounts  
[@Elgar\\_Law](https://twitter.com/Elgar_Law)

For a free copy of our latest  
Intellectual Property catalogue,  
Email: [info@e-elgar.co.uk](mailto:info@e-elgar.co.uk)



**Elgaronline**

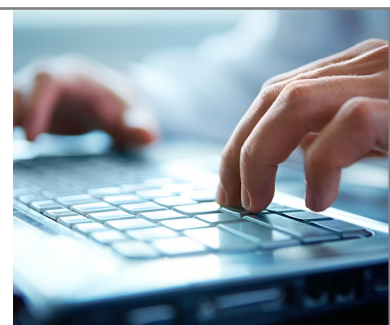
The digital content platform for libraries.  
Allows unlimited user, university wide access.

Includes monographs, research handbooks, encyclopedia, research reviews, journals and much more.  
Please email [sales@e-elgar.co.uk](mailto:sales@e-elgar.co.uk) (UK/RoW) or [elgarsales@e-elgar.com](mailto:elgarsales@e-elgar.com) (N/S America) for more information.

*Queen Mary Journal of Intellectual Property* is available on Elgaronline, providing full search and browse functionality and access to the journal archive.

Visit [Elgaronline.com](http://Elgaronline.com) for access to selected free articles.

[www.elgaronline.com/qmjip](http://www.elgaronline.com/qmjip)



## Editorial Board

**Professor Martin J. Adelman**, Theodore and James Pedas Family Professor of Intellectual Property and Technology Law, George Washington University, USA

**Professor Michael Blakeney**, The University of Western Australia, Australia

**Professor Kathy Bowrey**, University of New South Wales, Australia

**Professor Irene Calboli**, Singapore Management University School of Law, Singapore

**Professor Carlos Correa**, University of Buenos Aires, Argentina

**Professor Manuel Desantes**, Professor of Private International Law, University of Alicante, Spain

**Professor Graeme Dinwoodie**, Global Professor of Intellectual Property Law, IIT Chicago-Kent College of Law, USA

**Professor Abraham Drassinower**, Chair in the Legal, Ethical and Cultural Implications of Technological Innovation, University of Toronto, Canada

**Professor Rochelle Dreyfuss**, Pauline Newman Professor of Law, New York University, USA

**Professor Susy Frankel**, Victoria University of Wellington, New Zealand

**Professor Christophe Geiger**, CEIPI, University of Strasbourg, France

**Professor Gustavo Ghidini**, University of Milan and Luiss Guido Carli University, Rome, Italy

**Professor Frederik Willem Grosheide**, University of Utrecht, The Netherlands

**Professor Hugh Hansen**, Fordham University, USA

**Professor Chris Huang**, National Tsing Hua University, Taiwan

**The Rt Hon Professor Sir Robin Jacob**, Sir Hugh Laddie Professor of Intellectual Property Law, University College, London, UK

**Professor Phillip Johnson**, Cardiff University, UK

**Professor Ioannis Kokkoris**, Chair in Law and Economics, Queen Mary, University of London, UK

**Professor Hector MacQueen**, Professor of Private Law, University of Edinburgh, UK

**Professor Vytautas Mizaras**, Vilnius University, Lithuania

**Professor Sam Ricketson**, University of Melbourne, Australia

**Professor Janis Rozenfelds**, University of Latvia, Latvia

**Professor Brad Sherman**, Griffith University, Australia

**Professor Peter Yu**, Professor of Law and Co-Director, Center for Law and Intellectual Property, Texas A&M University School of Law, USA

---

## Submissions & Subscriptions

The *QMJP* is a quarterly peer-reviewed academic journal by the Queen Mary Intellectual Property Research Institute and is based at the Centre for Commercial Law Studies, Queen Mary, University of London, UK. Building upon Queen Mary's formidable reputation for research in intellectual property, the journal fosters academic discourse of the highest standard. It deals with both domestic and international issues, and covers the full range of substantive IP topics.

The editors seek high quality contributions of between 7,000-12,000 words from academics or practitioners working in the field.

Submissions and editorial queries should be sent to Johanna Gibson - Editor in Chief: editor@qmjip.com.

Book review submissions should be sent to Shane Burke: s.m.burke@qmul.ac.uk.

Full information about submissions or details for authors can be found at [www.elgaronline.com/qmjip](http://www.elgaronline.com/qmjip).

**Individuals:** £135.50/\$230.00 (online & print); £82.00/\$130.00 (online)

**Institutions:** £339.00/\$610.00 (online & print); £300.00/\$489.00 (online)

**Single print issue and electronic issue:** £65.00/\$100.00

Four issues per year

### To place a subscription worldwide:

The Subscriptions Dept, Marston Book Services  
160 Eastern Avenue  
Milton Park, Abingdon  
Oxfordshire OX14 4SB UK

**Tel:** +44 1235 465574 • **Fax:** +44 1235 465556

**Email:** [subscriptions@marston.co.uk](mailto:subscriptions@marston.co.uk)

---

## Abstracting and Indexing

- *Social Sciences Citation Index*
- *Scopus*
- *Legal Source, EBSCO*
- *Indexing of Periodical Literature Committee*
- *The Standard Periodical Directory*
- *J-Gate*
- *Legal Journals Index, Westlaw*
- *ERIH PLUS*

## Digital Preservation Services

- *Portico*

## Discovery Services

- *Exlibris*
- *Summon*
- *OCLC*
- *EBSCO Discovery*
- *Google Scholar*
- *CrossRef*

## Subscription Discounts

30% discount is available to new subscribers who take out a joint subscription to any 2 Elgar law journals.

For further information about this offer, please email: [journals@e-elgar.co.uk](mailto:journals@e-elgar.co.uk)

**[www.elgaronline.com/qmjip](http://www.elgaronline.com/qmjip)**

 **Edward Elgar**  
PUBLISHING  
**[www.e-elgar.com](http://www.e-elgar.com)**